

MV-CA023-10GM/GC

2.3 MP 1/1.2" CMOS GigE Area Scan Camera

GEN*i*CAM

GigE
VISION



Introduction

MV-CA023-10GM/GC camera adopts Sony IMX249 sensor to provide high-quality image. It uses GigE interface to transmit non-compressed images in real time with max. frame rate reaching 41 fps.

Key Feature

- Adopts GigE interface and max. transmission distance of 100 meters without relay.
- Supports auto and manual adjustment for exposure control, LUT, Gamma correction, etc.
- Up to 128 MB local memory for burst transmission and retransmission.
- Supports hardware trigger, software trigger, etc.
- Compatible with GigE Vision Protocol V2.0, GenICam Standard, and third-party software based on these protocol and standard.

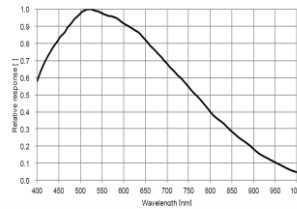
Available Model

- Mono camera: MV-CA023-10GM
- Color camera: MV-CA023-10GC

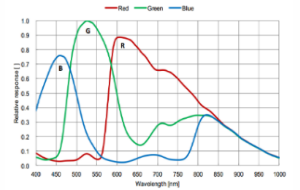
Applicable Industry

Electronic semiconductor, factory automation, food and beverage, medical packaging, etc.

Sensor Quantum Efficiency

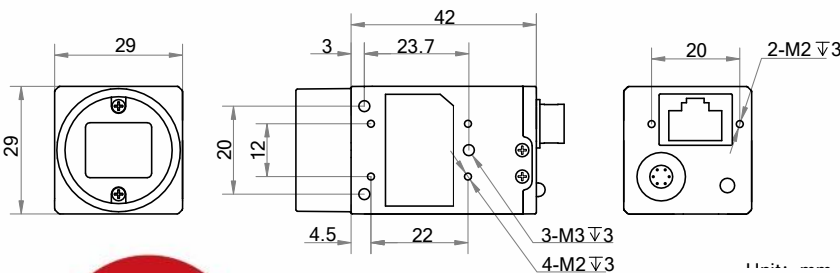


MV-CA023-10GM



MV-CA023-10GC

Dimension



en.hikrobotics.com



Aremak Bilişim Teknolojileri
Endüstriyel Görüntü İşleme Çözümleri

Adres: ODTÜ Teknokent Bilişim ve İnovasyon Merkezi,
Mustafa Kemal Mahallesi, Dumlupınar Bulvarı No:280G,
İç Kapı No:1260, Çankaya, Ankara/Türkiye

W: www.aremak.com.tr
E: shop@aremak.com.tr
T: +908502551506

Specification

Model	MV-CA023-10GM		MV-CA023-10GC
Camera			
Sensor type	CMOS, global shutter		
Sensor model	Sony IMX249		
Pixel size	5.86 μm × 5.86 μm		
Sensor size	1/1.2"		
Resolution	1920 × 1200		
Max. frame rate	41 fps @1920 × 1200		
Dynamic range	70 dB		
SNR	40 dB		
Gain	0 dB to 20 dB		
Exposure time	34 μs to 10 sec		
Exposure mode	Off/Once/Continuous exposure mode		
Mono/color	Mono	Color	
Pixel format	Mono 8/10/10p/12/12p	Mono 8/10/12, Bayer RG 8/10/10p/12/12p, YUV422Packed, YUV422_YUYV_Packed, RGB 8, BGR 8	
Binning	Supports 1 × 1, 1 × 2, 2 × 1, 1 × 4, 4 × 1, 2 × 2, 2 × 4, 4 × 2, 4 × 4		
Decimation	Supports 1 × 1, 1 × 2, 2 × 1, 1 × 4, 4 × 1, 2 × 2, 2 × 4, 4 × 2, 4 × 4		
Reverse image	Supports horizontal and vertical reverse image output		
Image buffer	128 MB		
Electrical feature			
Data interface	Gigabit Ethernet, compatible with Fast Ethernet		
Digital I/O	6-pin Hirose connector provides power and I/O, including opto-isolated input × 1 (Line 0), opto-isolated output × 1 (Line 1), bi-directional non-isolated I/O × 1 (Line 2).		
Power supply	12 VDC, supports PoE		
Power consumption	Typ. 2.9 W@12 VDC	Typ. 3.1 W@12 VDC	
Mechanical			
Lens mount	C-Mount		
Dimension	29 mm × 29 mm × 42 mm (1.1" × 1.1" × 1.7")		
Weight	Approx. 68 g (0.15 lb.)		
Ingress protection	IP30 (under proper lens installation and wiring)		
Temperature	Working temperature: 0 °C to 50 °C (32 °F to 122 °F) Storage temperature: -30 °C to 70 °C (-22 °F to 158 °F)		
Humidity	20% to 80% RH, non-condensing		
General			
Client software	MVS or third-party software meeting with GigE Vision Protocol		
Operating system	32/64-bit Windows XP/7/10, 32/64-bit Linux and 64-bit MacOS		
Compatibility	GigE Vision V2.0, GenICam		
Certification	CE, FCC, RoHS, KC		

HIKROBOT

Hangzhou Hikrobot Co., Ltd.
en.hikrobotics.com

© Hangzhou Hikrobot Co., Ltd. All Rights Reserved.

Hangzhou Hikrobot does not tolerate any infringement. Any organization or individual may not imitate or reproduce in whole or in part of the content. The data herein is based on Hikrobot's internal evaluation. Actual data may vary depending on specific configuration and operating condition. The information herein is subject to change without notice. All the content has been checked conscientiously. Nevertheless, Hikrobot shall not be liable to damages resulting from errors, inconsistencies or omissions.



Aremak Bilişim Teknolojileri
Endüstriyel Görüntü İşleme Çözümleri

Adres: ODTÜ Teknokent Bilişim ve İnovasyon Merkezi,
Mustafa Kemal Mahallesi, Dumlupınar Bulvarı No:280G,
İç Kapı No:1260, Çankaya, Ankara/Türkiye

W: www.aremak.com.tr
E: shop@aremak.com.tr
T: +908502551506