

MV-CE013-50GM/GC

1.3 MP 1/3" CCD GigE Area Scan Camera



GENCAM

GigE
VISION

Introduction

MV-CE013-50GM/GC camera is a high quality device that can be used in a variety of applications, including electronic semiconductor fabrication, factory automation, quality inspection.

Key Feature

- Adopts GigE interface and max. transmission distance of 100 meters without relay.
- Up to 128 MB local memory for burst transmission and retransmission.
- Supports auto exposure control, LUT, Gamma correction, etc.
- Supports hardware trigger, software trigger, etc.
- Compatible with GigE Vision V1.2 Protocol and the third-party software based on the protocol.

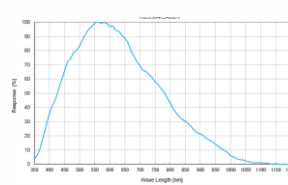
Available Model

- Mono camera: MV-CE013-50GM
- Color camera: MV-CE013-50GC

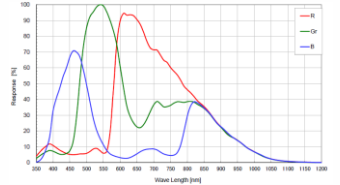
Applicable Industry

Electronic semiconductor, factory automation, quality inspection, etc.

Sensor Quantum Efficiency

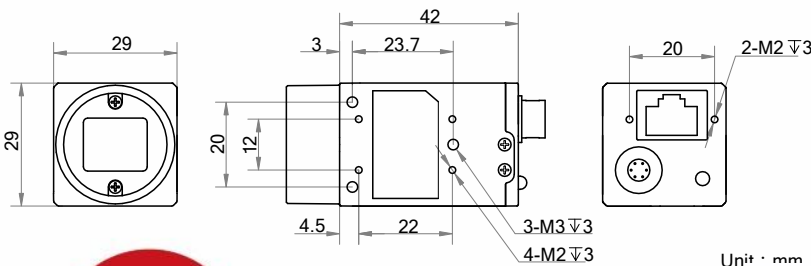


MV-CE013-50GM



MV-CE013-50GC

Dimension



en.hikrobotics.com

Unit : mm



Aremak Bilişim Teknolojileri
Endüstriyel Görüntü İşleme Çözümleri

Adres: ODTÜ Teknokent Bilişim ve İnovasyon Merkezi,
Mustafa Kemal Mahallesi, Dumlupınar Bulvarı No:280G,
İç Kapı No:1260, Çankaya, Ankara/Türkiye

W: www.aremak.com.tr
E: shop@aremak.com.tr
T: +908502551506

Specification

Model	MV-CE013-50GM	MV-CE013-50GC
Camera		
Sensor type	CCD, global shutter	
Sensor model	RJ33	
Pixel size	3.75 μm × 3.75 μm	
Sensor size	1/3"	
Resolution	1280 × 960	
Max. frame rate	30 fps @1280 × 960	
Dynamic range	60 dB	
SNR	37 dB	
Gain	0 dB to 20 dB	
Exposure time	34 μs to 1 sec	
Exposure mode	Off/Once/Continuous exposure mode	
Mono/color	Mono	Color
Pixel format	Mono 8/10/10p/12/12p	Mono 8/10/12, Bayer GR 8/10/10p/12/12p, YUV 422 Packed, YUV422_YUYV_Packed, RGB 8
Binning	Not support	
Decimation	Not support	
Reverse image	Supports horizontal reverse image output	
Image buffer	128 MB	
Electrical feature		
Data interface	Gigabit Ethernet, compatible with Fast Ethernet	
Digital I/O	6-pin Hirose connector provides power and I/O, including opto-isolated input × 1 (Line 0), opto-isolated output × 1 (Line 1), bi-directional non-isolated I/O × 1 (Line 2).	
Power supply	12 VDC, supports PoE	
Power consumption	Typ. 2.6 W@12 VDC	
Mechanical		
Lens mount	C-Mount	
Dimension	29 mm × 29 mm × 42 mm (1.1" × 1.1" × 1.7")	
Weight	Approx. 68 g (0.15 lb.)	
Ingress protection	IP30 (under proper lens installation and wiring)	
Temperature	Working temperature: 0 °C to 50 °C (32 °F to 122 °F) Storage temperature: -30 °C to 70 °C (-22 °F to 158 °F)	
Humidity	20% to 80% RH, non-condensing	
General		
Client software	MVS or third-party software meeting with GigE Vision Protocol	
Operating system	32/64-bit Windows XP/7/10, 32/64-bit Linux and 64-bit MacOS	
Compatibility	GigE Vision V1.2, GenICam	
Certification	CE, RoHS, KC	

HIKROBOT

Hangzhou Hikrobot Co., Ltd.
en.hikrobotics.com

© Hangzhou Hikrobot Co., Ltd. All Rights Reserved.

Hangzhou Hikrobot does not tolerate any infringement. Any organization or individual may not imitate or reproduce in whole or in part of the content. The data herein is based on Hikrobot's internal evaluation. Actual data may vary depending on specific configuration and operating condition. The information herein is subject to change without notice. All the content has been checked conscientiously. Nevertheless, Hikrobot shall not be liable to damages resulting from errors, inconsistencies or omissions.



Aremak Bilişim Teknolojileri
Endüstriyel Görüntü İşleme Çözümleri

Adres: ODTÜ Teknokent Bilişim ve İnovasyon Merkezi,
Mustafa Kemal Mahallesi, Dumlupınar Bulvarı No:280G,
İç Kapı No:1260, Çankaya, Ankara/Türkiye

W: www.aremak.com.tr
E: shop@aremak.com.tr
T: +908502551506